

Coastal Issue Workshop: Remote Sensing of Intertidal Shellfish Habitats



UNIVERSITY OF SOUTH CAROLINA



Baruch Institute

Belle W. Baruch Institute for Marine Biology & Coastal Research
University of South Carolina * Columbia, SC 29208



Sponsors:

ACE Basin and North Inlet-Winyah Bay National
Estuarine Research Reserves

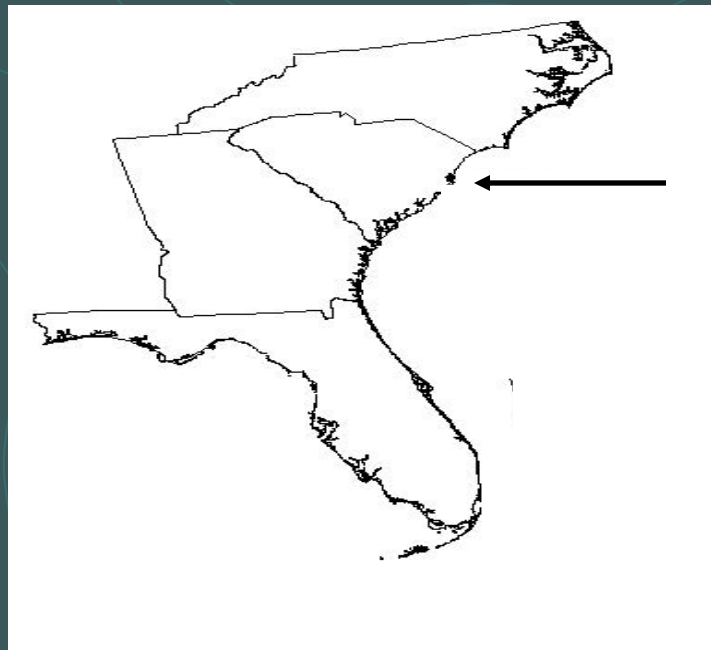
South Carolina Department of Natural Resources,
Marine Resources Division

South Carolina Sea Grant Consortium

Office of Ocean and Coastal Resource Management,
SCDHEC



North Inlet -- Winyah Bay Region



Shellfish habitats are valuable and diverse



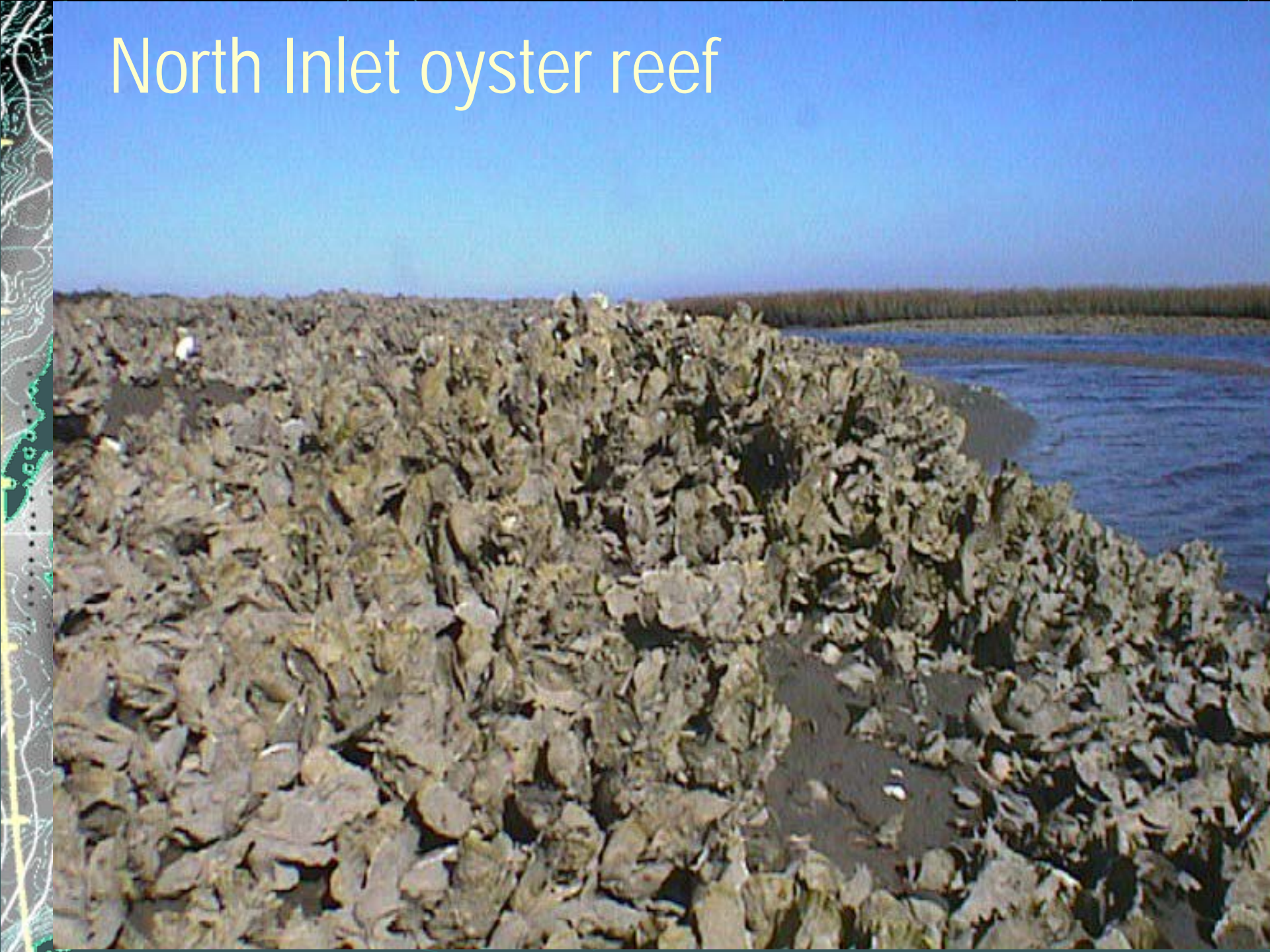
Difficult to map and assess



Goals and objectives

- Review existing techniques NH-LA
- Discuss objectives and needs of managers and researchers
- Learn about new and developing technologies
- Compare, contrast and identify possible points of integration
- Develop new collaborative efforts to address needs and objectives

North Inlet oyster reef



Charleston Cluster

