

An underwater photograph showing a dense field of oyster shells on the seabed. The shells are light-colored and vary in size, creating a textured, uneven surface. The water is slightly murky, with some greenish-brown sediment or algae visible. The lighting is natural, coming from above, creating highlights and shadows on the shells.

Restoring Oyster Reef Habitat

Florida Department of Agriculture
and Consumer Services

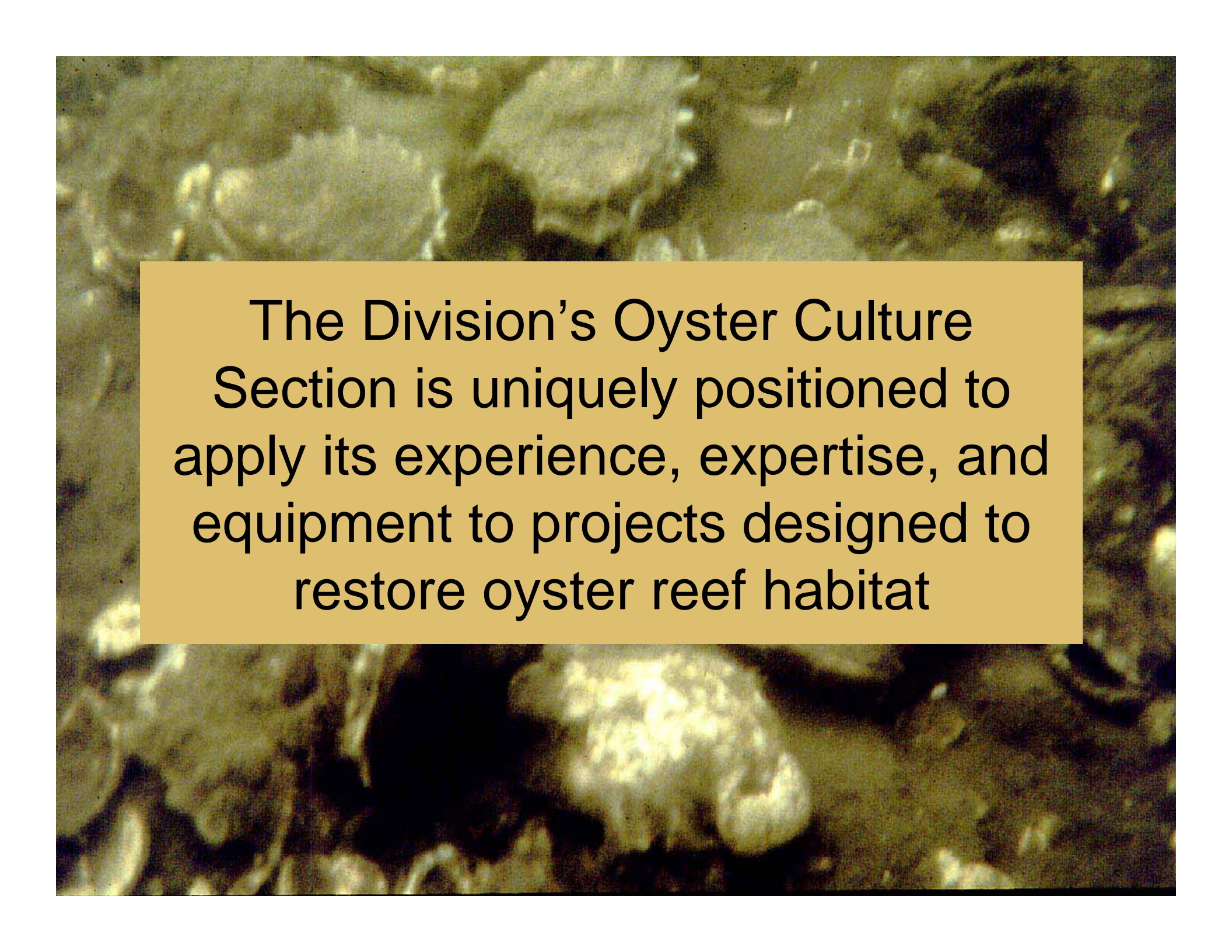
A presentation by the Division of Aquaculture, Oyster Culture Program



The Division has restored oyster reefs
in most of the state's historically
productive estuaries



The Oyster Culture Program has been active for
more than 50 years

The background of the slide is a photograph of an oyster reef. It shows numerous oyster shells of various sizes and orientations, some with green algae growing on them. The lighting is somewhat dim, giving the scene a natural, underwater feel. A semi-transparent yellow rectangular box is centered over the image, containing the text.

The Division's Oyster Culture
Section is uniquely positioned to
apply its experience, expertise, and
equipment to projects designed to
restore oyster reef habitat

The Shellfish Mariner



Oyster Reef Construction

Yesterday & Today



DOA Oyster Reef Construction Equipment



Washing shell with a high pressure water stream



Restored Subtidal Oyster Reef



Constructed Intertidal Oyster Reef



Oyster Shell Cultch



Intertidal Oyster Reef



Calico Scallop Shell



Graded Limestone used for Cultch



Fossilized Cultch Material



Oyster Spat on Fossil Shell



Juvenile Oysters on Fossil Shell



Monitoring



Establishing transects on an intertidal reef



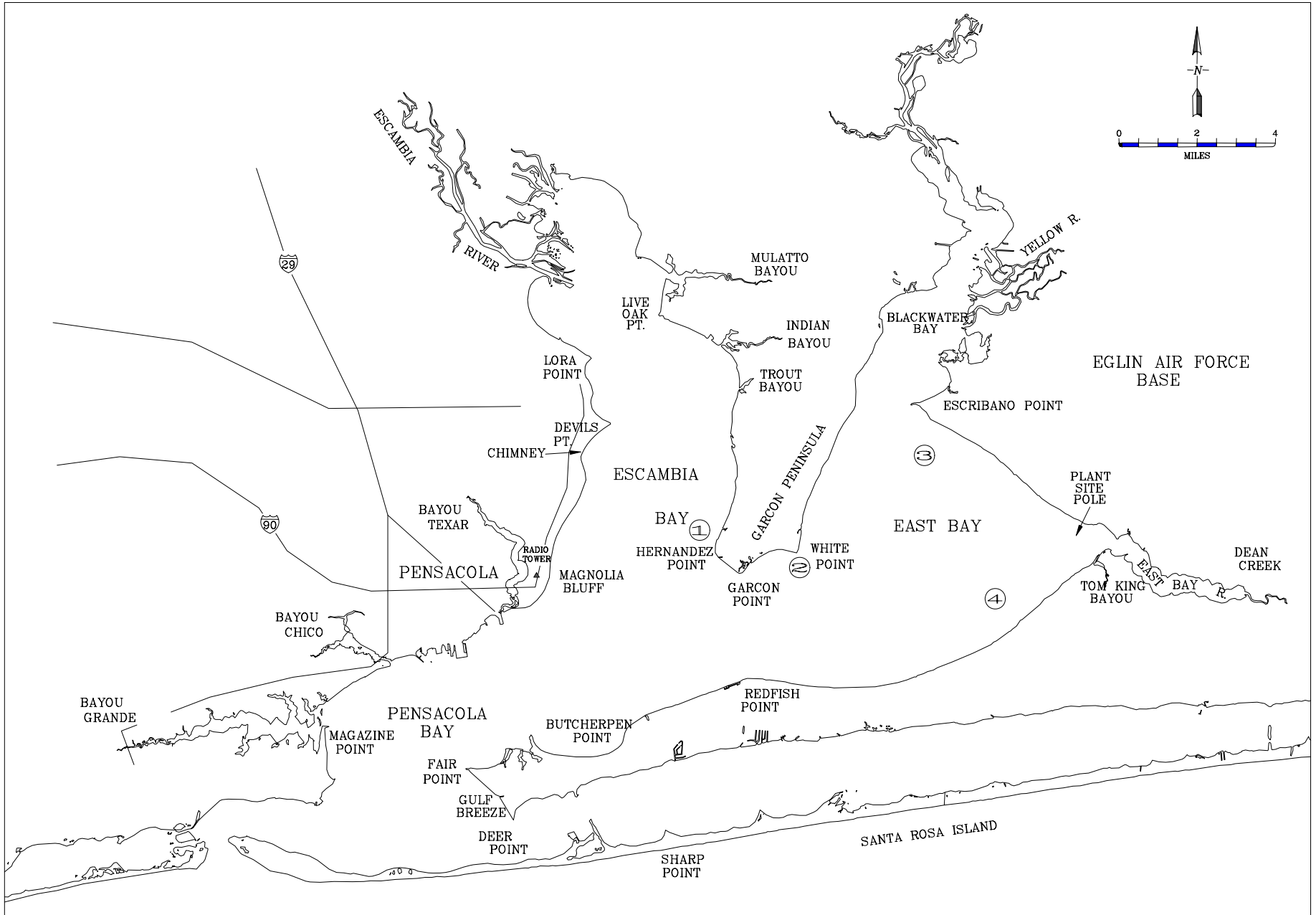
Functional Oyster Reefs Provide Numerous Ecological Services



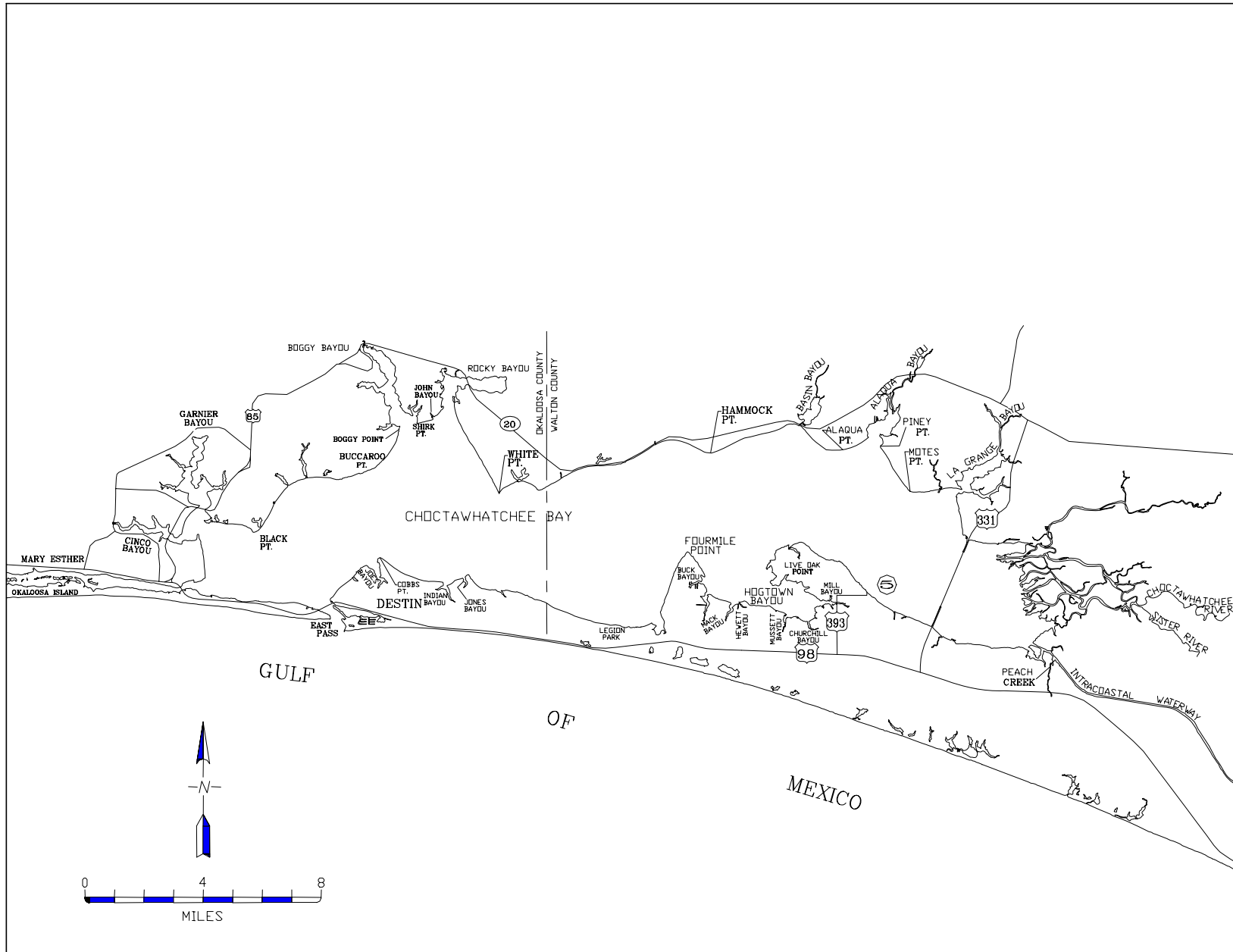
Productive oyster reefs contribute to:

- fishery and wildlife habitat
- species diversity
- food web
- water quality maintenance
- shoreline stability
- nutrient recycling

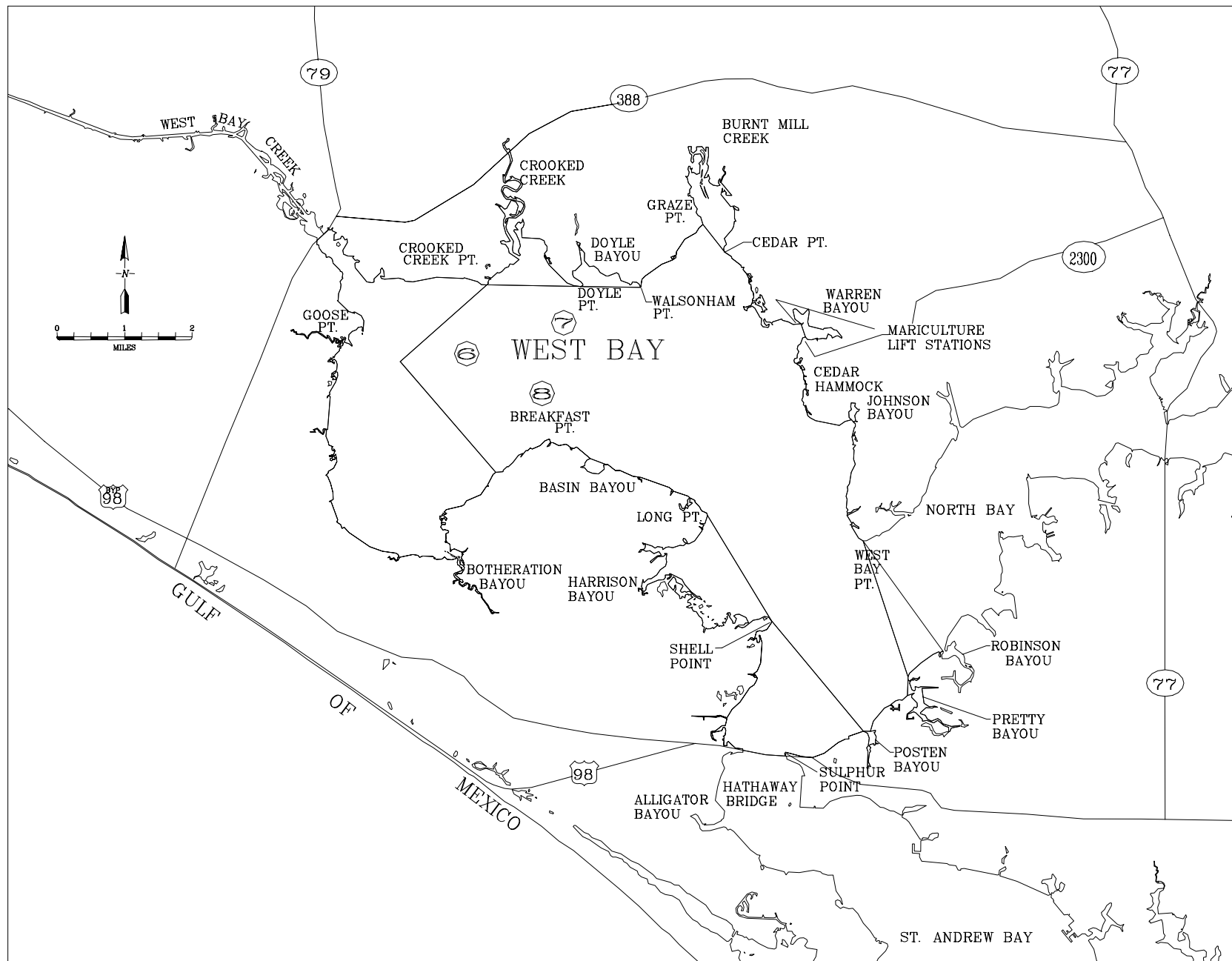
PROJECTED RESTORATION SITE MAP



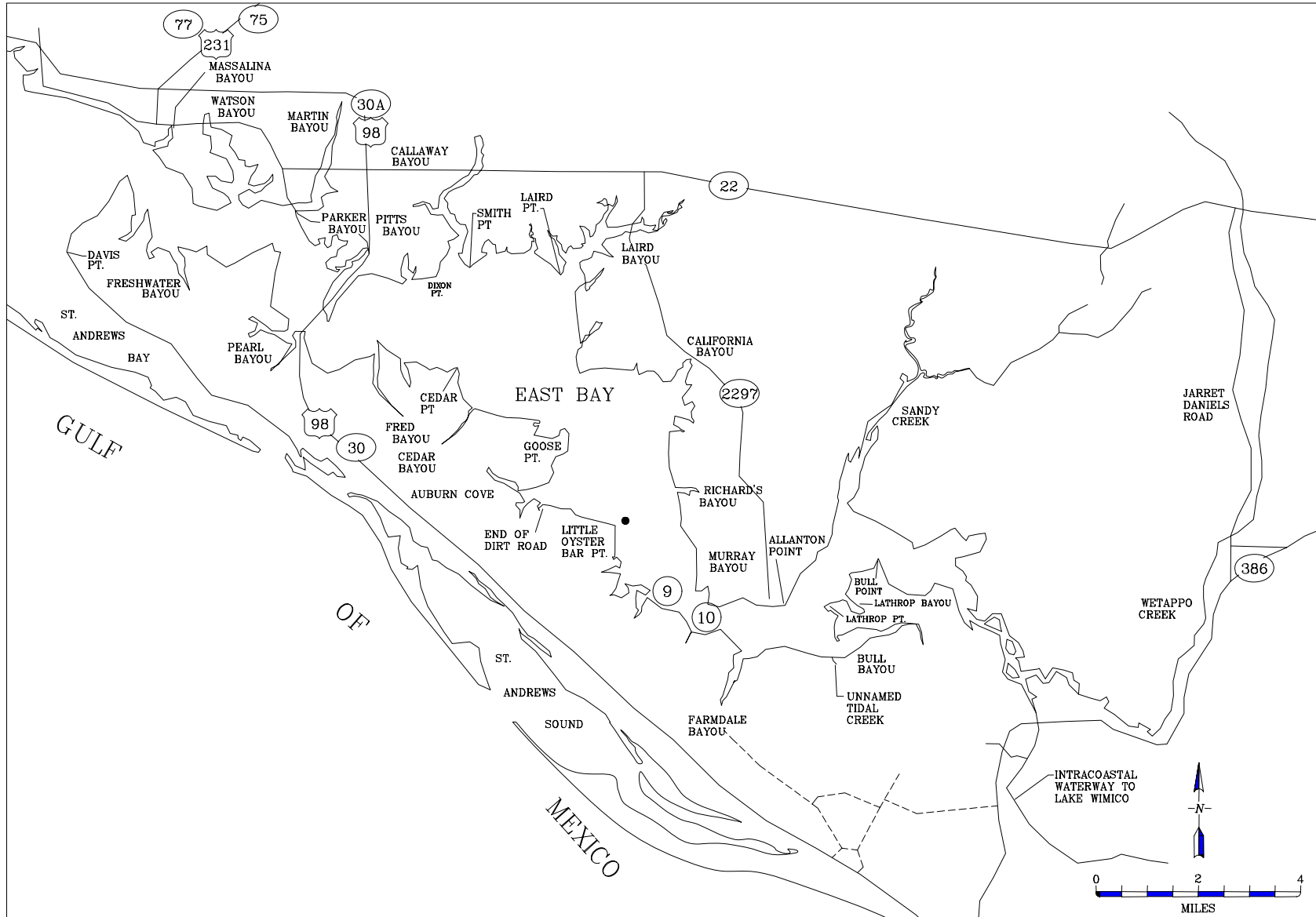
PROJECTED RESTORATION SITE MAP



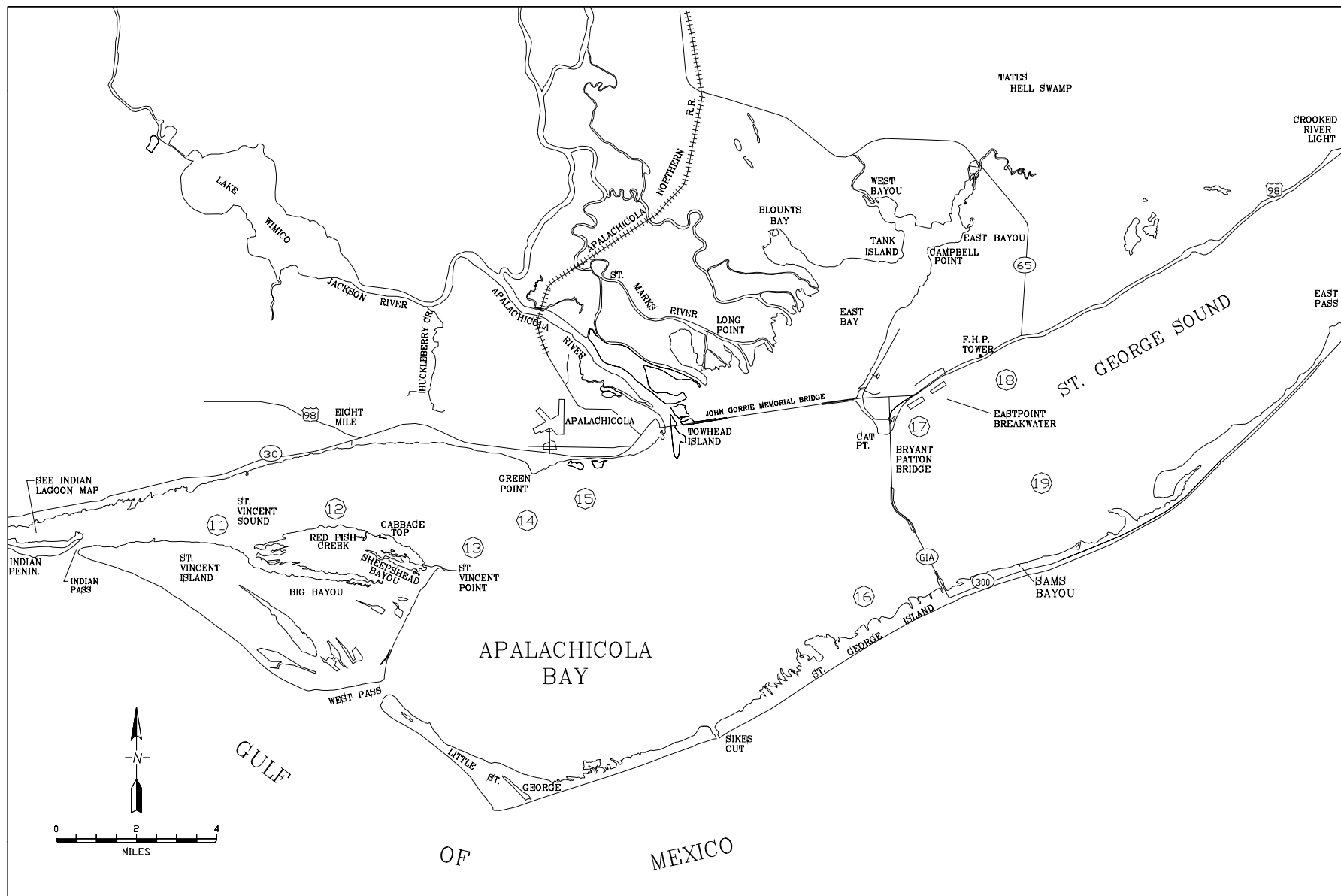
PROJECTED RESTORATION SITE MAP



PROJECTED RESTORATION SITE MAP



PROJECTED RESTORATION SITE MAP



Map of Ochlockonee Bay area showing various creeks, islands, and points. The map includes labels for locations such as Medart, Purify Creek, Stokley Landing, Skipper Creek, Panacea, Hungry Pt., Levy Bay, Oyster Cove, Mashers Island, Ullmore Cove, and Ochlockonee Point. It also shows major roads like 319, 98, 372, 375, 365, 367, and 372A. A scale bar indicates 0 to 2 miles, and a north arrow is present. The map is titled "SEE OCHLOCKONEE BAY MAP" at the bottom.

PROJECTED RESTORATION SITE MAP



PROJECTED RESTORATION SITE MAP

