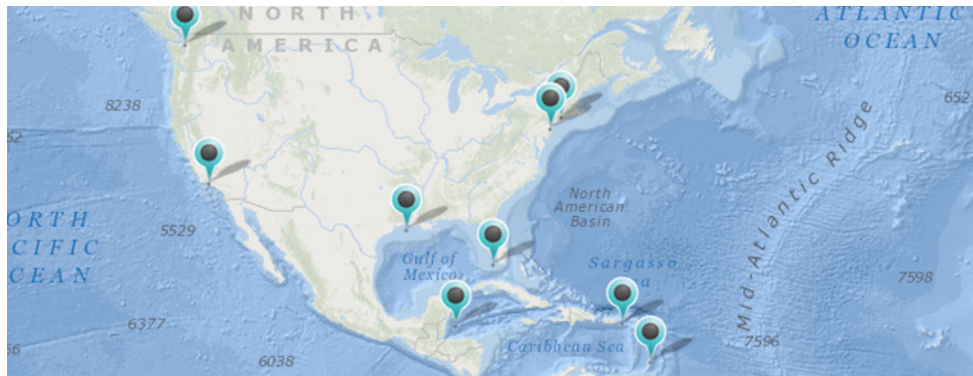


# Coastal Resilience 2.0

Tools for assessing risk and identifying nature-based solutions to reduce socio-economic vulnerability to coastal hazards



These tools, available at [maps.coastalresilience.org](https://maps.coastalresilience.org), allow you to interactively examine storm surge, sea level rise, natural resources, and economic assets and to develop solutions for risk reduction and restoration.

# Coastal Resilience

is an approach that supports decisions to reduce the ecological and socio-economic risks of coastal hazards. It includes 4 critical steps:

- **Assess Risk and Vulnerability** to coastal hazards
- **Identify Solutions** using built and nature-based infrastructure
- **Take Action** to implement adaptation solutions
- **Measure Effectiveness** of reducing risk

The Coastal Resilience tools cover different regions, including: a U.S. National and Global application, 8 U.S. states (Florida, Alabama, Mississippi, Louisiana, Texas, New York, Connecticut, New Jersey), 2 U.S. locations (Puget Sound, WA, and Ventura County, CA); 4 Latin American countries (Mexico, Belize, Guatemala, Honduras), and 3 island nations in the Caribbean (Grenada, St. Vincent and the Grenadines, U.S. Virgin Islands).

Coastal Resilience 2.0 has an upgraded visualization platform and a modular, configurable plug-in architecture allowing custom apps to be designed to address specific coastal issues. These Coastal Resilience apps include a risk and restoration explorer, a future habitat and coastal defense app, and apps for flood and sea-level rise scenarios and community planning.

## Coastal Resilience 2.0

- runs faster
- operates on tablets
- works nationally and globally
- developed as open source
- contains shareable results and data



**For more information, contact: [coastalresilience@tnc.org](mailto:coastalresilience@tnc.org)**